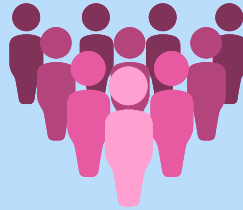


AUSTRALIAN EPILEPSY RESEARCH REGISTRY

LONGITUDINAL STUDY - WAVE 2

A Snapshot of People Living with Epilepsy

343
PARTICIPATED



72% were
living with
epilepsy

The average age
43.3 years

43%
male



57%
female

CHARACTERISTICS OF PEOPLE WITH EPILEPSY



Education level
Most people had a Year
11 or less level



Work Status
Only 38% were
employed

of which 45% were full time
and 30% were part time.

Weekly income

Very low - most people received within the range of
\$250 - \$500 (the national minimum was \$590)



NEEDS AND PERCEPTIONS

58% experienced Tonic Clonic type seizures

61% were on multiple
medications for their
epilepsy



31% only had full
control of
their epilepsy



55% had suffered injuries as a result of their
seizures

64% required hospital treatment for their
injuries

The impact of epilepsy on people's lives included -

- their ability to drive a car,
- their memory,
- their future plans and ambitions,
- their self-esteem and confidence, and
- their social life.

